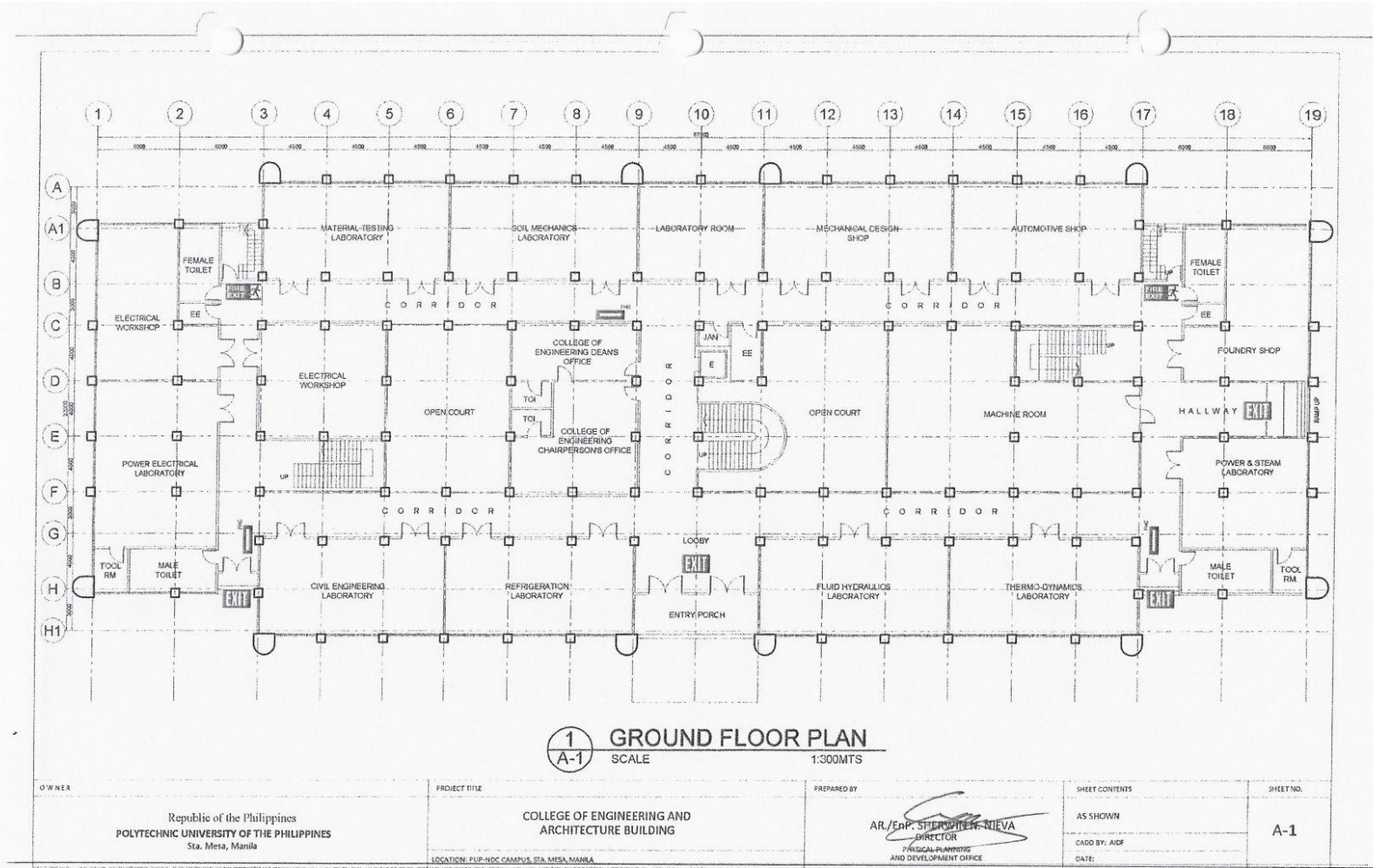




**POLYTECHNIC UNIVERSITY OF THE PHILIPPINES  
COLLEGE OF ENGINEERING  
COMPUTER ENGINEERING DEPARTMENT**

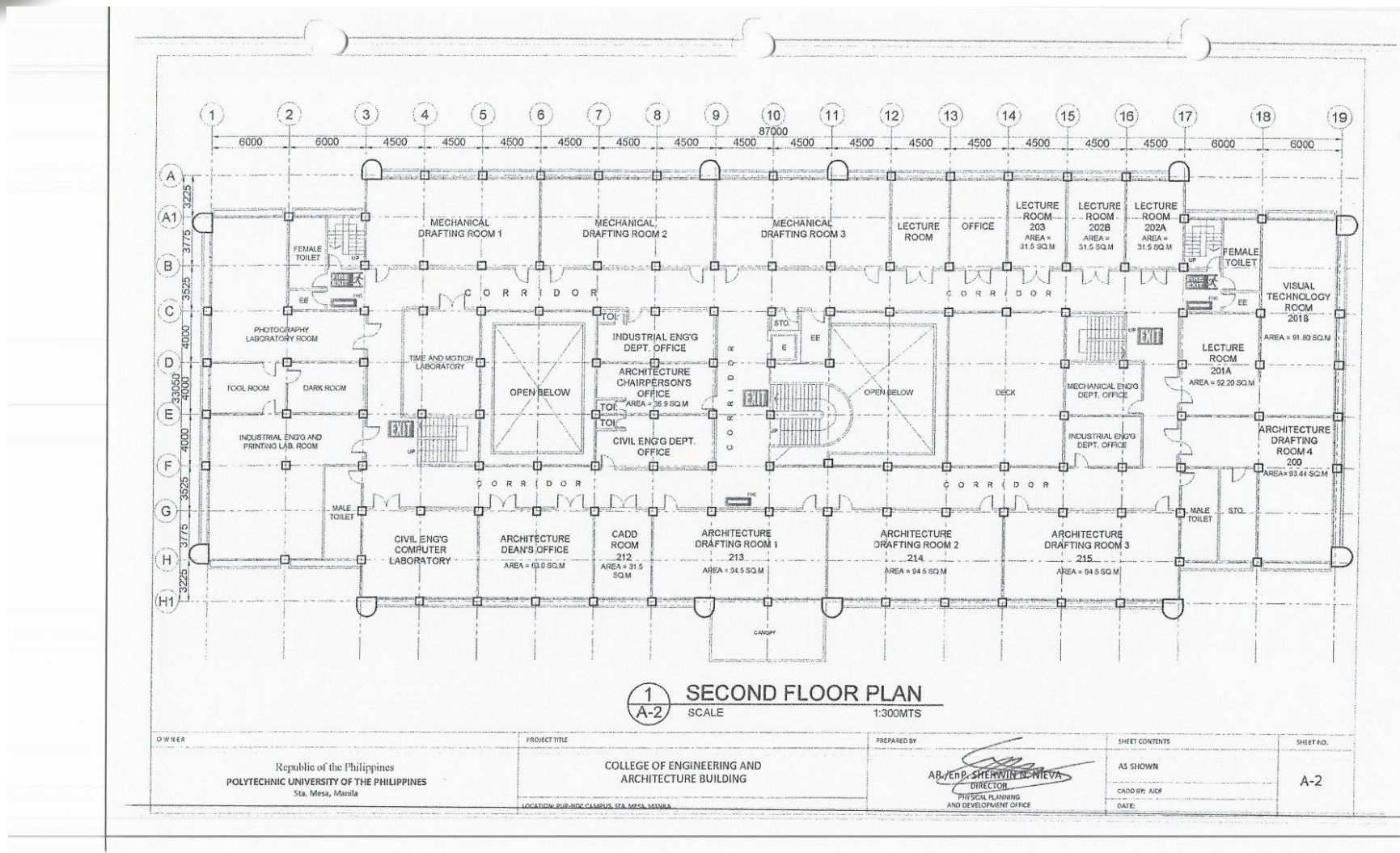


(02) 8713 5968 | dcoe\_chair@gmail.com  
RM322 CEA BLDG. NDC COMPOUND,  
ANONAS COR. PUREZA STREETS, STA. MESA, MANILA





**POLYTECHNIC UNIVERSITY OF THE PHILIPPINES  
COLLEGE OF ENGINEERING  
COMPUTER ENGINEERING DEPARTMENT**



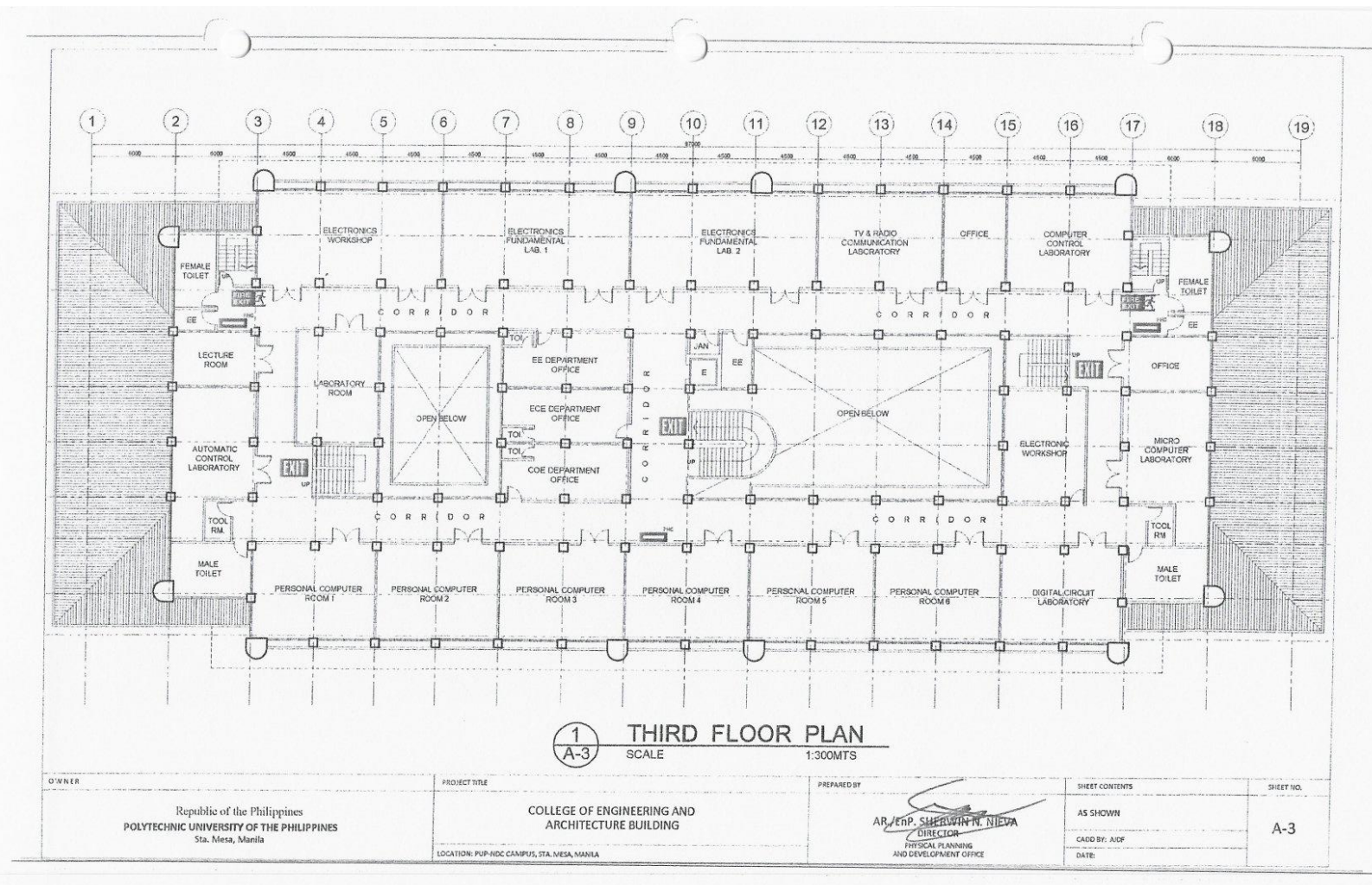
(02) 8713 5968 | dcoe\_chair@gmail.com  
RM322 CEA BLDG. NDC COMPOUND,  
ANONAS COR. PUREZA STREETS, STA. MESA, MANILA







**POLYTECHNIC UNIVERSITY OF THE PHILIPPINES  
COLLEGE OF ENGINEERING  
COMPUTER ENGINEERING DEPARTMENT**

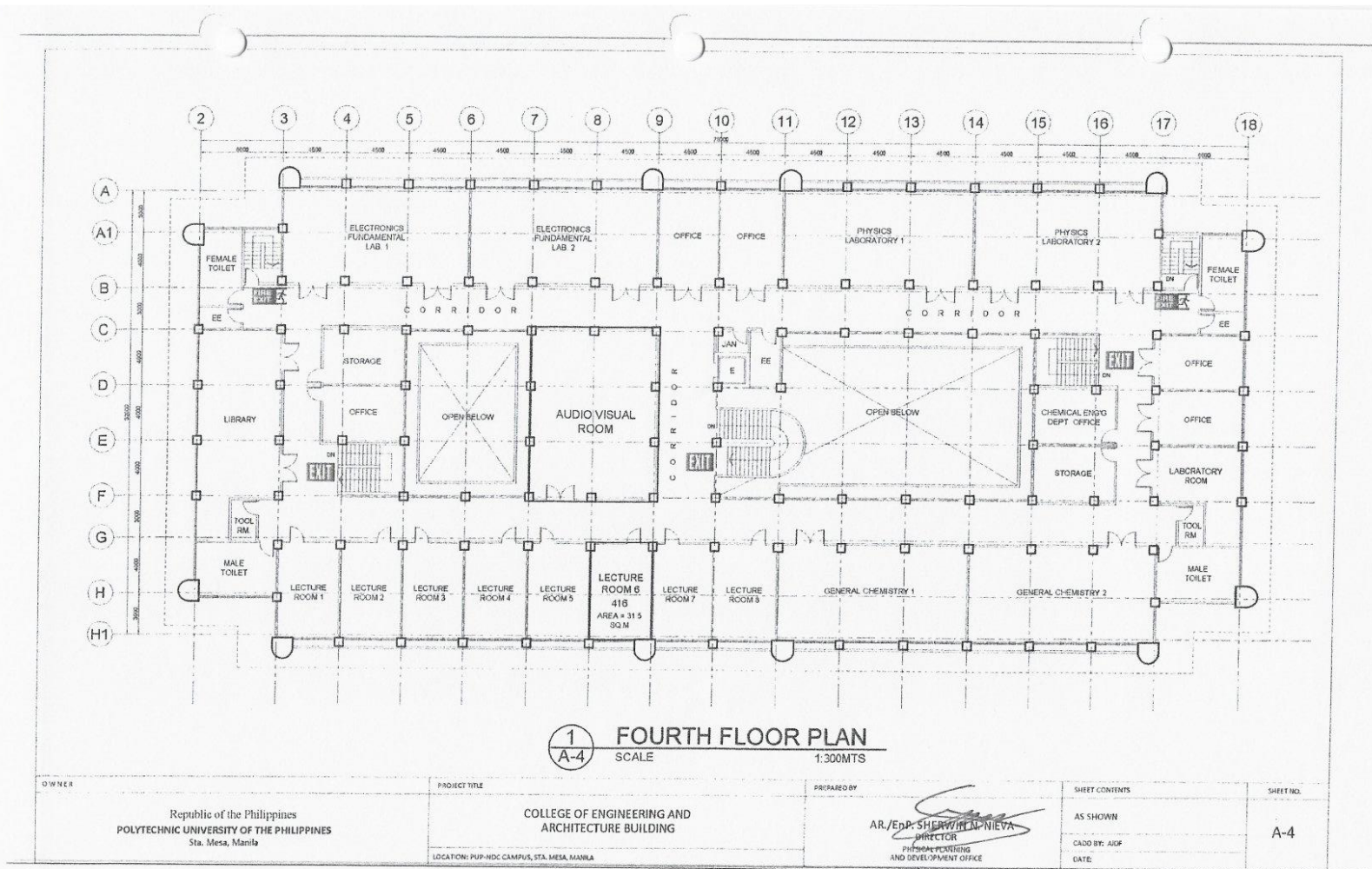


(02) 8713 5968 | dcoe\_chair@gmail.com  
RM322 CEA BLDG. NDC COMPOUND,  
ANONAS COR. PUREZA STREETS, STA. MESA, MANILA





**POLYTECHNIC UNIVERSITY OF THE PHILIPPINES**  
**COLLEGE OF ENGINEERING**  
**COMPUTER ENGINEERING DEPARTMENT**



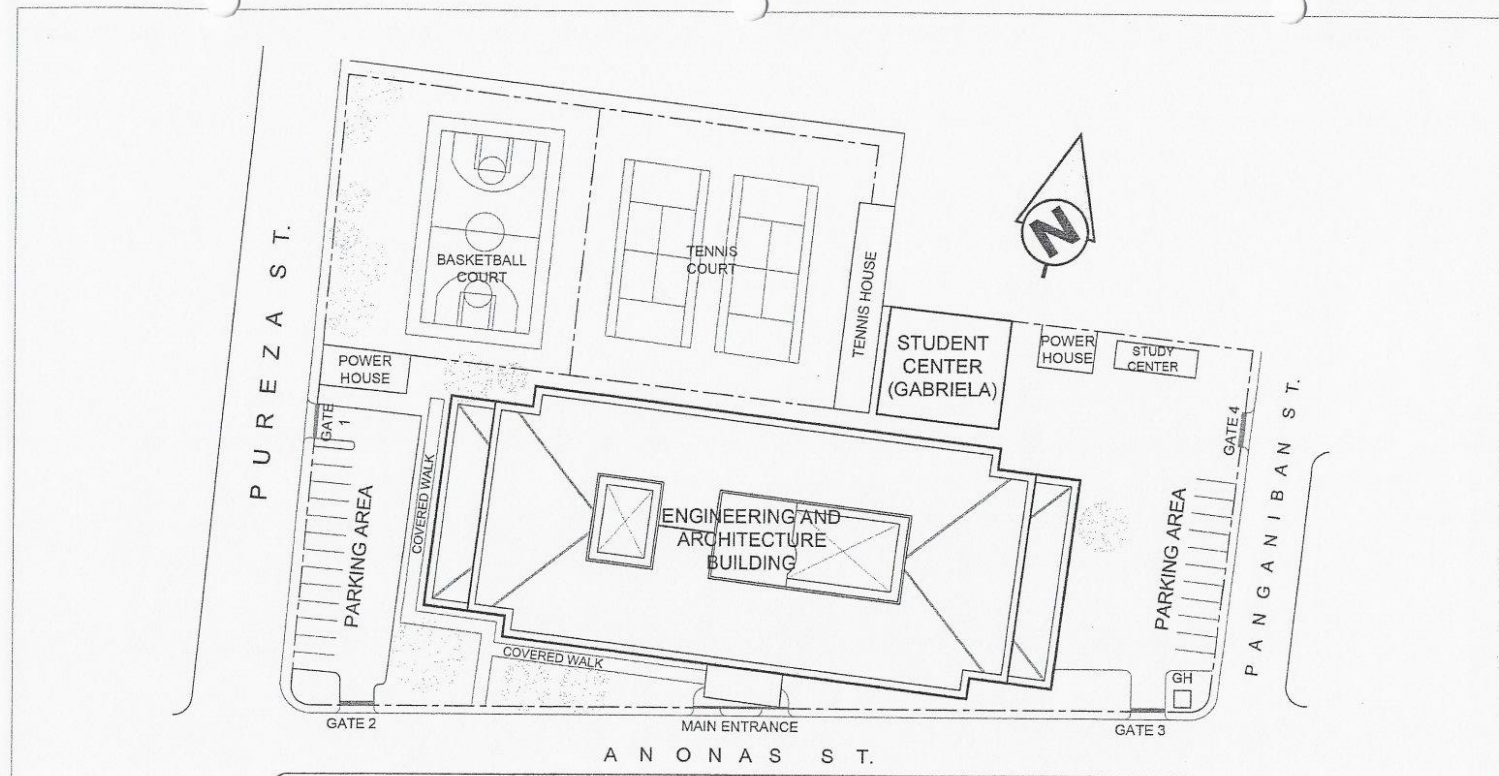
(02) 8713 5968 | dcoe\_chair@gmail.com  
 RM322 CEA BLDG. NDC COMPOUND,  
 ANONAS COR. PUREZA STREETS, STA. MESA, MANILA







**POLYTECHNIC UNIVERSITY OF THE PHILIPPINES**  
**COLLEGE OF ENGINEERING**  
**COMPUTER ENGINEERING DEPARTMENT**



**SITE DEVELOPMENT PLAN**  
 SCALE 1:700M TS

OWNER	PROJECT TITLE	PREPARED BY	SHEET CONTENTS	SHEET NO.
Republic of the Philippines POLYTECHNIC UNIVERSITY OF THE PHILIPPINES Sta. Mesa, Manila	COLLEGE OF ENGINEERING AND ARCHITECTURE SITE DEVELOPMENT PLAN <small>LOCATION: NDC CAMPUS, STA. MESA, MANILA</small>	AR. EDY SHERWIN NEVA DIRECTOR <small>PHYSICAL PLANNING AND DEVELOPMENT OFFICE</small>	AS SHOWN CADD BY: AJDF DATE:	A-1

(02) 8713 5968 | dcoe\_chair@gmail.com  
 RM322 CEA BLDG. NDC COMPOUND,  
 ANONAS COR. PUREZA STREETS, STA. MESA, MANILA





POLYTECHNIC UNIVERSITY OF THE PHILIPPINES  
COLLEGE OF ENGINEERING  
**COMPUTER ENGINEERING DEPARTMENT**



COLLEGE OF ENGINEERING AND  
ARCHITECTURE